

# Liquid Level Control Technical Data

## Description:

P/N:00219104 and P/N:00219105 are solid state liquid level control boards. They are widely used to control water level of carbonated water tank used in restaurants, but it can be used in other industrial and commercial applications as well. It has 3 minutes or 7 minutes time-out safety features. The default is set to 7 min, i.e., if the pump continue to run for 7 min, the pump will be cut off, the red LED light will light up, need to turn off power to reset. To disable the time out feature, remove the jumper JP2.



## Output (Terminal N, LOAD):

1. 00219104: 7.2A @120VAC 1/3HP
2. 00219105: 3.6A @230VAC 1/3HP
3. Operations:  $> 1 \times 10^6$

## Level Probes (Terminal C, H, L):

1. C - Common (Usually Tank Body)
2. H- High level point to turn off
3. L- Low Level point to turn On

## Environmental:

1. Operating temperature:  $-30^{\circ}\text{C}$  to  $+60^{\circ}\text{C}$
2. Storage temperature:  $-40^{\circ}\text{C}$  to  $+85^{\circ}\text{C}$
3. Humidity: 95% relative, non-condensing
4. Weight: 5.7Oz

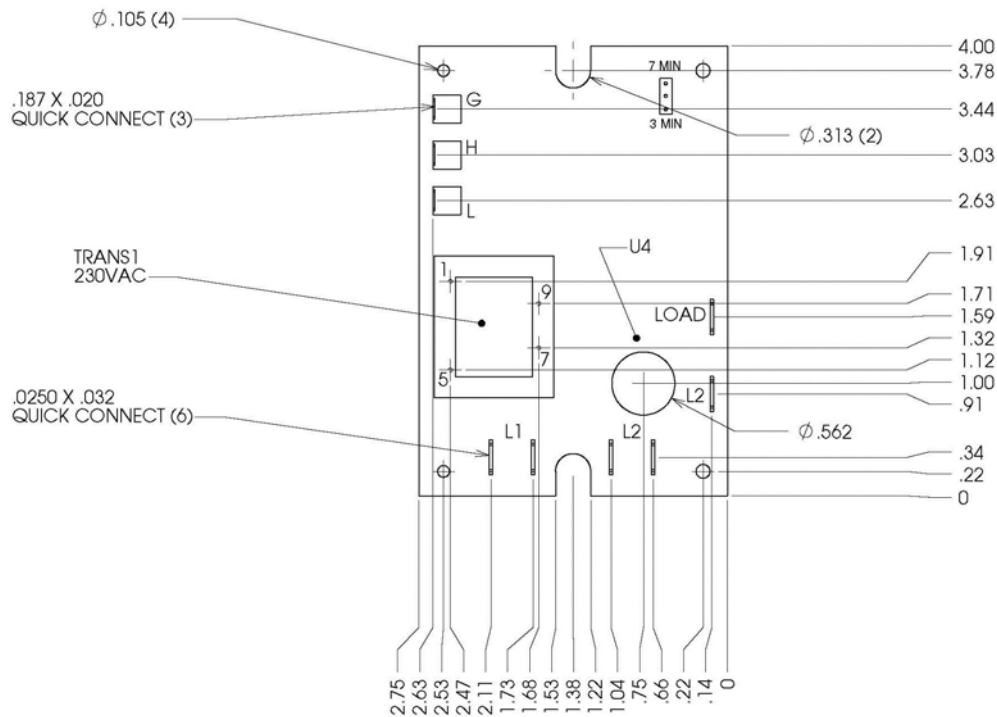
## Approval:

1. UL and CSA:
2. CE
3. RoHS

## Electrical Input (Terminal L1, N):

1. Voltage: P/N:00219104 110VAC 50/60Hz  
P/N:00219105 230VAC 50/60Hz
2. Power Consumption:  $< 1\text{VA}$   
\*Input has duplicate terminals for other power source

## Mechanical Dimension:



**MaxTronic Technologies LLC**